



Colorissimo[®]
Business Gifts 2026

EXPEDITION

collection



Powder Coating

Unlike traditional liquid paint applications, our standing-out powder coating employs a dry powder, resulting in a robust finish. This advanced technique ensures great resistance to chips, scratches, and wear, guaranteeing longevity and visual appeal. Moreover, our collections showcase a thoughtful design that seamlessly blends aesthetics with functionality. The distinctive pattern not only captures attention but also serves a practical purpose, enhancing the grip and preventing mugs from slipping out of your hand.



POSCO steel

Renowned for its unwavering commitment to international quality certifications and standards, Korean manufacturer POSCO ensures that our components meet the highest benchmarks of precision and durability. Selecting our products means more than just acquiring first-rate components – it signifies a choice for the highest quality and a commitment to sustainability. POSCO steel, with its exceptional properties, ensures optimal performance and longevity. Beyond that, you align yourself with a company deeply rooted in innovation.



Stainless Steel 18/8

This specific grade of stainless steel offers exceptional resistance to acids and carbonates, ensuring longevity and reliability in diverse applications. Our 18/8 stainless steel is a composition of 18% chromium, forming a protective oxide layer on the surface that enhances corrosion resistance. In addition, the inclusion of 8% nickel not only contributes to the steel's durability but further augments its ability to withstand corrosion challenges. Grant yourself components that stand the test of time and maintain superior performance, even in demanding environments.



Tritan

The material is known for its exceptional clarity, allowing it to resemble glass in appearance. Tritan is highly durable and resistant to shattering, making it a safer option, especially in comparison to glass. This characteristic makes it a popular choice for products intended for outdoor activities, such as water bottles. Additionally, Tritan resists absorbing stains and odors, providing a clean and hygienic option for beverage containers.



Warranty

Colorissimo® products are designed and manufactured to meet the highest standards of quality, made in accordance with all the valued declarations and certificates to ensure safety. To provide you the best experience, our Expedition collection is covered by up to 2-years warranty.





NEON WATER BOTTLES, 550 ML | 750 ML

HTR01 | HTR02

A stylish and practical bottle made from durable TRITAN™, it ensures long-lasting use. The one-click opening provides quick access, while a lock prevents spills when not in use. A wide opening allows for ice cubes, and the built-in handle adds convenience —dishwasher safe for easy cleaning.

Materials: Tritan™, ABS, plastic, polyamide

Packing: factory packaging

Printing: pad printing, UV printing

(including 360°), UV engraving

Certificates: Food Contact, BPA FREE, LFGB



SAFE TRITAN BOTTLES





SECURE LOCK | EASY-DRINK SPOUT

NEON LARGE CAPACITY WATER BOTTLES, 1000 ML | 1500 ML

HTR03 | HTR04

A practical and stylish flask-style bottle designed for everyday use, travel, or the office. Made from durable Eastman TRITAN™, it resists cracks, damage, and high temperatures, combining long-lasting performance with safety. Features a convenient one-click opening and a double leakproof seal to prevent spills, plus a wide opening for ice cubes. Its ergonomic handle ensures easy carrying.

Materials: Tritan™, ABS, polypropylene, polycarbonate

Packing: factory packaging

Printing: pad printing, UV printing (including 360°), UV engraving

Certificates: Food Contact, BPA FREE, LFGB



1000/1500 ML CAPACITY

LARGE CAPACITY TRITAN BOTTLES





EXPEDITION COFFEE MUGS, 330 ML | 450 ML

HGN03 | HGN02

A durable thermal mug made from high-quality POSCO stainless steel for excellent temperature retention. Features a leakproof lid with a colorful lock for secure, convenient use on the go. BPA-free and LFGB certified, safe for both hot and cold drinks.

Materials: POSCO 18/8 stainless steel, copper, PP, silicone, ABS

Packing: factory packaging

Printing: engraving, UV printing

(including 360°), pad printing

Certificates: Food Contact, BPA FREE, LFGB



POSCO INSULATED DRINKWARE





EXPEDITION STEEL WATER BOTTLE, 650 ML

HBNO4

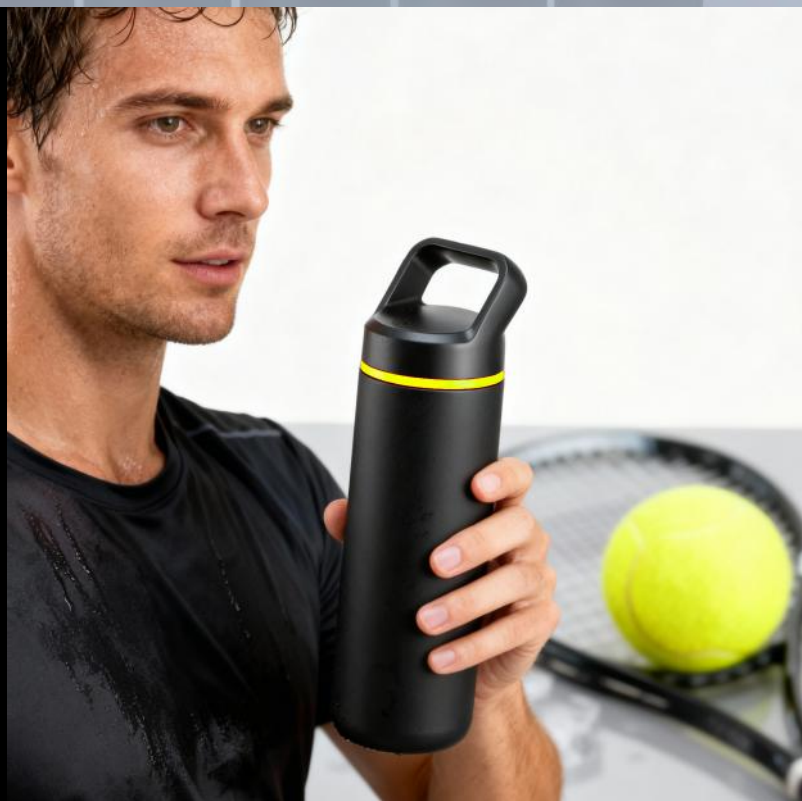
A slim, durable water bottle made from noble POSCO stainless steel for long-lasting use. Features a convenient handle on the cap and a colorful silicone gasket for a secure, leak-resistant seal. BPA-free and LFGB certified, safe for all beverages.

Materials: POSCO 18/8 stainless steel, PP, silicone, copper

Packing: factory packaging

Printing: engraving, UV printing (including 360°), pad printing

Certificates: Food Contact, BPA FREE, LFGB



POSCO STAINLESS WATER BOTTLE



PRACTICAL DRINKWARE SETS



**EXPEDITION SET: COFFEE
MUG 450 ML & STEEL WATER
BOTTLE 650 ML**

HGN02/HBN04

Materials: POSCO 18/8 stainless steel, copper,
PP, silicone, ABS

Packing: gift box

Printing: engraving, UV printing
(including 360°), pad printing,

Certificates: Food Contact, BPA FREE, LFGB



EXPEDITION SET: COFFEE MUG 450 ML & AUTOMATIC UMBRELLA

HGN02/US25

Materials: POSCO 18/8 stainless steel, PP, copper, silicone,
ABS, metal, fiberglass, polyester pongee

Packing: gift box

Printing: engraving, UV printing (including 360°), pad
printing, screen printing, DTF, reflective flex film

Certificates: Food Contact, BPA FREE, LFGB, REACH





AIR CHANNEL VENTILATION SYSTEM

EXPEDITION SPORTS BACKPACKS M | L | XL

LPN280 | LPN270 | LPN260

Functional and durable sports backpacks made from 420D nylon with PU coating. They feature a spacious main compartment, an extra front zipper pocket (L & XL models), side pockets, padded back panel, and adjustable shoulder straps for a customized fit. The XL backpack additionally features an airflow back panel, ensuring comfort during long use, and a luggage strap that allows easy attachment to a suitcase handle.

Dimensions: M: 43 x 29 x 16 cm | L: 48 x 30 x 18 cm | XL: 51 x 32 x 18 cm

Materials: nylon 420D, polyester 210D, PU

Packing: foil

Printing: screen printing, DTF, reflective flex film

Certificates: REACH

1. LPN270



2. LPN260



3. LPN280



3.

COMPACT BACKPACK, **COMPACT PRICE**

EXPEDITION FUNCTIONAL BACKPACKS





EXPEDITION SPORTS BACKPACK XXL

LPN250

A large and durable sports backpack made from 420D nylon with PU coating. It features two main compartments, a front zipper pocket, a bottom pocket with a rain cover, a thermal side pocket, and a soft inner laptop pocket. Adjustable side, chest, and shoulder straps ensure a comfortable fit, supported by an airflow back panel for enhanced ventilation. A luggage strap allows easy attachment to a suitcase.

Dimensions: 51 x 32 x 18 cm

Materials: nylon 420D, polyester 210D, PU

Packing: foil

Printing: screen printing, DTF, reflective flex film

Certificates: REACH

■ ■ ■ □ + ■ rain cover



SIDE INSULATED POCKET

EXPEDITION BACKPACK WITH A RAIN COVER





EXPEDITION SPORTS BAG
LSN340
non-rigid material,
1 side pocket



EXPEDITION TRAVEL BAG
LSN290
rigid material,
2 side pockets

EXPEDITION TRAVEL & SPORTS BAGS

LSN290 | LSN340

Durable and versatile sports bags made from 420D nylon with PU coating. They feature a spacious main compartment, a side pocket dedicated for shoes, and a detachable shoulder strap for flexible carrying. Perfect for training, travel, and everyday activities.

Dimensions: LSN290: 60 x 27 x 29 cm

LSN340: 58 x 28 x 27 cm

Materials: nylon 420D, polyester 210D, PU

Packing: foil

Printing: screen printing, DTF, reflective flex film

Certificates: REACH

1. LSN340



2. LSN290



HIGH-PERFORMANCE NYLON 420D/PU

EXPEDITION LIGHTWEIGHT BAGS





EXPEDITION WAIST BAG

LNN240

A lightweight and durable waist bag made from 420D nylon with PU coating. Features a main zipper pocket, a front zipper pocket, and a reflective elastic cord construction for added visibility. The padded mesh back panel ensures comfortable wear during any activity. Ideal for travel, running, and everyday essentials.

Dimensions: 36 x 7 x 14 cm; strap length: 91cm

Materials: nylon 420D, polyester 210D, PU

Packing: foil

Printing: screen printing, DTF, reflective flex film

Certificates: REACH



EXPEDITION ULTRA LIGHT WAIST BAG





EXPEDITION BLUETOOTH SPEAKER 5W

PS50

Compact wireless speaker connects via Bluetooth and works up to 8 hours on a single charge. Covered with high-quality silicone and ABS material, resistant to damage. Thanks to its small size and fabric loop, it can be conveniently carried and used to attach keys or a keychain.

Materials: ABS, silicone

Packing: factory packaging

Printing: pad printing, UV engraving

Certificates: CE, RoHS, EMC, WEEE Directive



EXPEDITION COMPACT WIRELESS SPEAKER



- Bluetooth version: 5.0
- Built-in battery: Li-ion 3.7v 1200mAh
- Bluetooth frequency: 2.402-2.480 GHz
- Play time: up to 8 hours



EXPEDITION BLUETOOTH SPEAKER 2X6W

PS60

A compact and portable Bluetooth speaker designed for high-quality sound anywhere. Delivers clear, powerful audio with up to 8 hours of playtime and supports TWS pairing for stereo sound. Features AUX input and a stylish, durable housing with a fabric grill and lanyard.

Materials: ABS, silicone

Packing: factory packaging

Printing: UV engraving

Certificates: CE, RoHS, EMC, WEEE Directive



PORTABLE SPEAKER WITH LED RING



- Bluetooth version: 5.3
- Built-in battery: 3.6V 2000mAh
- Frequency Response: 80HZ-20KHZ
- Play time: up to 8 hours



OPTI KEYCHAIN CHARGING & DATA CABLE

CKC10

Support:

- USB-C to C: 3A (PD60W)
- USB-C to Lightning: 3A (PD27W)
- USB-A to C: 3A (18W)
- USB-A to Lightning: 2.4A (12W)

Data transfer speed: USB2.0 480Mbps.

Woven cable with Kevlar and zinc alloy.

Compliant with: CE-EMC, RoHS.



OPTI MAGNETIC USB-C TO USB-C CABLE

CBL10

Support: 3A (PD60W).

Data transfer speed: USB2.0 480Mbps.

Woven cable with Kevlar, aramid fiber
and tinplate.

Compliant with: CE-EMC, RoHS.





OPTI PRO LANYARD CABLE: USB-C TO USB-C

CBL30

Support: 3A (PD60W).

Data transfer speed: USB2.0 480Mbps.

Woven cable with Kevlar and aramid fiber.

Compliant with: CE-EMC, RoHS.





OPTI COLOR CHARGING & DATA CABLE

CBL40

Support:

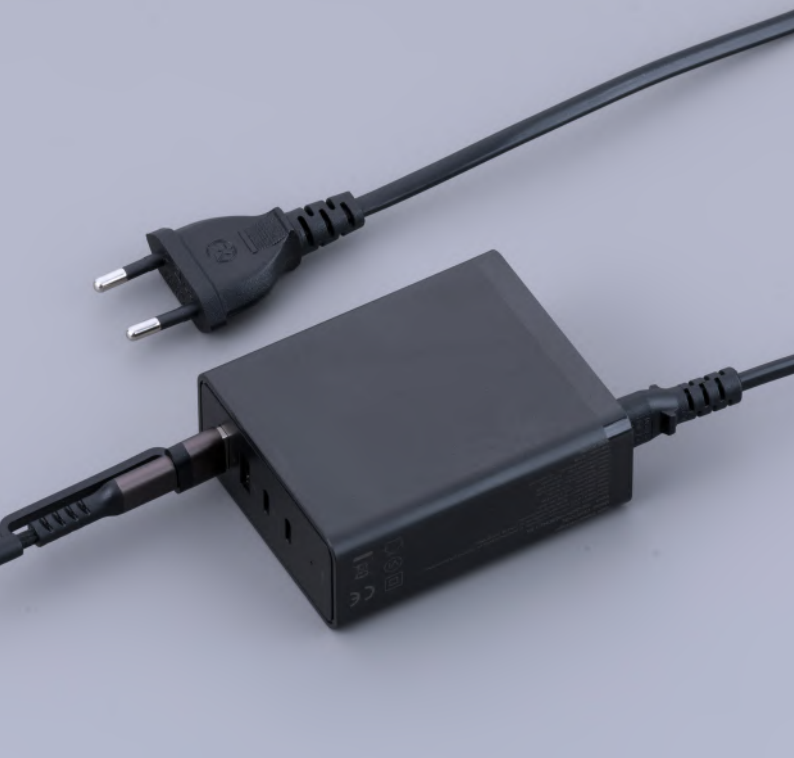
- USB-C to C: 3A (PD60W)
- USB-C to Lightning: 3A (PD27W)
- USB-A to C: 3A
- USB-A to Lightning: 2.4A

Data transfer speed: USB2.0 480Mbps.

Woven cable with Kevlar.

Compliant with: CE-EMC, RoHS.





OPTI POWER GaN DESKTOP FAST CHARGING TOWER

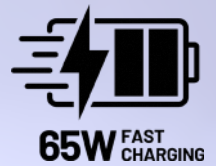
CHR10

Functions:

- Dual USB-C (C1 & C2) ports
- Dual USB-A (A1 & A2) ports
- Support: total output up to 65W
- C1 or C2: 65.0W (5V/9V/12V/15V=3A, 20V=3.25A)
- A1 or A2: 18.0W
- PPS Support: 5-11V / 5A for optimal fast charging with compatible devices.

Materials: plastic

Compliant with: CE-LVD, CE-EMC, RoHS.



NORDIC

collection



Powder Coating

Unlike traditional liquid paint applications, our standing-out powder coating employs a dry powder, resulting in a robust finish. This advanced technique ensures great resistance to chips, scratches, and wear, guaranteeing longevity and visual appeal. Moreover, our collections showcase a thoughtful design that seamlessly blends aesthetics with functionality. The distinctive pattern not only captures attention but also serves a practical purpose, enhancing the grip and preventing mugs from slipping out of your hand.



POSCO steel

Renowned for its unwavering commitment to international quality certifications and standards, Korean manufacturer POSCO ensures that our components meet the highest benchmarks of precision and durability. Selecting our products means more than just acquiring first-rate components – it signifies a choice for the highest quality and a commitment to sustainability. POSCO steel, with its exceptional properties, ensures optimal performance and longevity. Beyond that, you align yourself with a company deeply rooted in innovation.



Stainless Steel 18/8

This specific grade of stainless steel offers exceptional resistance to acids and carbonates, ensuring longevity and reliability in diverse applications. Our 18/8 stainless steel is a composition of 18% chromium, forming a protective oxide layer on the surface that enhances corrosion resistance. In addition, the inclusion of 8% nickel not only contributes to the steel's durability but further augments its ability to withstand corrosion challenges. Grant yourself components that stand the test of time and maintain superior performance, even in demanding environments.



Warranty

Colorissimo® products are designed and manufactured to meet the highest standards of quality, made in accordance with all the valued declarations and certificates to ensure safety. To provide you the best experience, our Nordic collection is covered by up to 3-year warranty.





NORDIC THERMAL COFFEE MUG, 350 ML

HCM01

A modern thermal mug that combines style, comfort, and reliable insulation. Made from high-quality Korean POSCO 18/8 stainless steel with a matte powder-coated finish for a secure grip. Double-wall insulation keeps drinks hot for up to 6 hours or cold for up to 12 hours, while the leak-proof lid ensures safe transport.

Materials: POSCO 18/8 stainless steel, copper, silicone

Packing: factory packaging

Printing: engraving, UV printing (including 360°), pad printing

Certificates: Food Contact, BPA FREE, LFGB



COPPER-COATED VACUUM WALL

POSCO INSULATED COFFEE MUG

posco
steel





NORDIC THERMAL WATER BOTTLE, 500 ML

HBNO2

A sleek and durable bottle made from high-quality Korean POSCO 18/8 stainless steel, combining excellent insulation with a stylish finish. Double-wall vacuum construction keeps drinks hot for up to 8 hours and cold for up to 12 hours. The powder-coated surface protects against scratches and ensures a secure grip.

Materials: POSCO 18/8 stainless steel, silicone
Packing: factory packaging
Printing: engraving, UV printing (including 360°), pad printing
Certificates: Food Contact, BPA FREE, LFGB



UV 360° PRINTING EXAMPLE

POSCO INSULATED WATER BOTTLE



posco
steel



NORDIC SET: COFFEE MUG 350 ML & THERMAL WATER BOTTLE 500 ML

HCM01/HBN02

Materials: 18/8 POSCO stainless steel, copper, silicone

Packing: gift box

Printing: engraving, UV printing (including 360°), pad printing

Certificates: Food Contact, BPA FREE, LFGB



posco
steel



TRAVELLER SET: THERMAL MUG 350 ML & AUTOMATIC UMBRELLA

HCM01/US20

Materials: POSCO 18/8 stainless steel, copper, silicone,
ABS, metal, fiberglass, polyester pongee

Packing: gift box

Printing: engraving, UV printing (including 360°),
pad printing, screen printing, DTF, reflective flex film

Certificates: Food Contact, BPA FREE, LFGB, CE, REACH





POSCO STEEL



COPPER-COATED VACUUM WALL

NORDIC INSULATED LUNCH BOX, 800 ML

HFN03

Made from noble POSCO 18/8 stainless steel, it is exceptionally durable and resistant to mechanical damage. Thanks to its double stainless-steel walls and vacuum insulation technology, the container effectively maintains food temperature for many hours without affecting the taste or aroma.

Materials: POSCO 18/8 stainless steel, copper, silicone

Packing: factory packaging

Printing: engraving, UV printing (including 360°), pad printing

Certificates: Food Contact, BPA FREE, LFGB

□



INSULATED LID

POSCO STAINLESS LUNCH BOX

posco
steel





PREMIUM PORCELAIN LAYER
for purity of flavor

NORDIC PORCELAIN COFFEE MUG, 630 ML

HPC01

NORDIC PORCELAIN FOODJAR, 800 ML

HFN05

Made from POSCO stainless steel, ensuring durability and stable thermal performance. The porcelain interior provides a neutral taste profile, while the stainless-steel body increases impact resistance. All materials are BPA-free and made in compliance with LFGB, guaranteeing safe use with hot and cold beverages.

Materials: POSCO 18/8 stainless steel, copper, PP, porcelain, silicone

Packing: factory packaging

Printing: engraving, UV printing (including 360°), pad printing

Certificates: Food Contact, BPA FREE, LFGB



LEAK-PROOF LID

PORCELAIN-LINED COLLECTION

posco
steel





PEVA LINING
WATERPROOF & PVC FREE

ARCTIC COOLER BAG

CLC20

A practical and spacious lunch bag designed for everyday use. It features a main insulated compartment with a PEVA lining to keep food fresh, an additional zippered top pocket for small items, and side pockets for extra storage. Its compact shape and comfortable carry handle make it convenient for work, school, or travel.

Dimensions: 20 x 26 x 26 cm

Materials: 15C PEVA lining, poliester 600D/PU

Packing: foil

Printing: screen printing , DTF, reflective flex film

Certificates: REACH



SMOOTH PREMIUM POLYESTER FABRIC

ARCTIC THERMAL LUNCH BAG





CAMBRIDGE FULLY AUTOMATIC UMBRELLA

US20

An unusually robust umbrella from the Cambridge collection with DAS (Double Automatic System - automatic closing and opening) and the anti-wind system. Features: a solid metal frame, a canopy made of strong polyester pongee and a handle covered with ABS plastic for both a safe grip and a nice feeling. Protective cover included.

Materials: metal, fiberglass, polyester pongee, ABS

Packing: foil

Printing: screen printing, DTF, reflective flex film

Certificates: CE, REACH



FULLY
AUTOMATIC
UMBRELLA





FLASH HIP BAG

LNN501

A durable and practical hip bag, made of tear-resistant material for everyday use. Features a spacious main compartment and a smaller front zippered pocket for essentials. Equipped with an adjustable strap, reflective detailing for visibility, a headphone output, and an airflow back system for comfort.

Materials: nylon, Jacquard 420D, nylon Ripstop, polyester 600D
Packing: foil
Printing: screen printing, embroidery
Certificates: REACH





FLASH COSMETIC BAG

FT560

A practical and compact cosmetic bag, featuring a spacious main compartment with partitions to organize your cosmetics. Equipped with a handy metal hook for easy hanging and better access to your products. Lightweight and portable, it's perfect for business trips, summer holidays, or the gym, with a 6 L capacity.

Materials: nylon, Jacquard, polyester 600D

Packing: foil

Printing: screen printing, epoxy sticker, engraving, DTF

Certificates: REACH



DYNAMIC

collection



Powder Coating

Unlike traditional liquid paint applications, our standing-out powder coating employs a dry powder, resulting in a robust finish. This advanced technique ensures great resistance to chips, scratches, and wear, guaranteeing longevity and visual appeal. Moreover, our collections showcase a thoughtful design that seamlessly blends aesthetics with functionality. The distinctive pattern not only captures attention but also serves a practical purpose, enhancing the grip and preventing mugs from slipping out of your hand.



Polyester 1260D

A densely woven, highly resilient material designed to withstand demanding, everyday use. Its strong fiber structure offers excellent resistance to abrasion and deformation, ensuring long-lasting durability. The fabric is naturally water-repellent, providing reliable protection against rain and moisture. With its subtle texture and robust performance, 1260D polyester is a trusted choice for high-quality bags and accessories.



Warranty

Colorissimo® products are designed and manufactured to meet the highest standards of quality, made in accordance with all the valued declarations and certificates to ensure safety. To provide you the best experience, our Dynamic collection is covered by up to 3-year warranty.



POSCO steel

Renowned for its unwavering commitment to international quality certifications and standards, Korean manufacturer POSCO ensures that our components meet the highest benchmarks of precision and durability. Selecting our products means more than just acquiring first-rate components – it signifies a choice for the highest quality and a commitment to sustainability. POSCO steel, with its exceptional properties, ensures optimal performance and longevity. Beyond that, you align yourself with a company deeply rooted in innovation.



REACH compliance

As a manufacturer selling our goods in the EU market, we must comply with REACH regulations, contributing to sustainable and environmentally friendly production practices. Colorissimo® aims at manufacturing the highest quality products while enhancing consumer safety, ensuring long-lasting gifts that will not impact the environment.





DYNAMIC COFFEE MUG, 370 ML

HCM04

A sleek, slim-designed thermal mug made from high-quality POSCO stainless steel for reliable temperature retention. Features a colorful silicone gasket for a secure, leak-resistant seal. BPA-free and LFGB certified, safe for both hot and cold beverages.

Materials: POSCO 18/8 stainless steel, copper, PP, silicone

Packing: factory packaging

Printing: engraving, UV printing, pad printing

Certificates: Food Contact, BPA FREE, LFGB



TIGHT-SEAL LID

POSCO INSULATED COFFEE MUG

posco
steel





PU-COATED WATER-RESISTANT FABRIC

DYNAMIC 2-COMPARTMENT BUSINESS BACKPACK

LPN350

The backpack is made from damage-resistant 1260D polyester, it features a large main compartment with a padded laptop sleeve (up to 15.6") and a front zippered pocket for quick access. Side mesh pockets, waterproof zippers, and reinforced walls provide protection and practicality, while the breathable back panel, padded adjustable straps, and top handle ensure comfort. Modern black design with colorful accents combines style with functionality for any occasion.

Materials: polyester 600D, polyester 210D, polyester 1260D, PU coating

Packing: foil

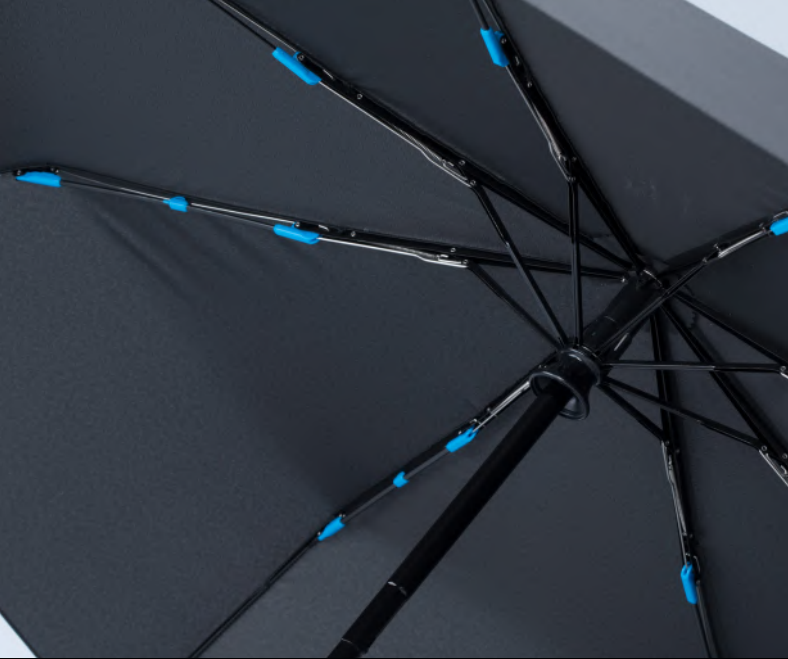
Printing: engraving, screen printing, epoxy sticker

Certificates: REACH



DYNAMIC WATERPROOF BACKPACK





FIBERGLASS RIBS

DYNAMIC AUTOMATIC UMBRELLA

US25

An exceptionally robust umbrella designed for everyday use and travel. It features a solid, corrosion-resistant metal frame, a durable polyester pongee canopy, and the DAS system for quick one-button opening and closing. The anti-wind mechanism allows the canopy to flex under strong gusts, increasing its longevity and reliability. Protective cover included.

Materials: metal, fiberglass, ABS, polyester pongee
Packing: foil
Printing: screen printing, DTF, reflective flex film
Certificates: CE, REACH



AUTOMATIC CLOSING & OPENING

FULLY AUTOMATIC UMBRELLA



FUNCTIONAL SETS

EVERYDAY SET: COFFEE MUG 370 ML & WIRELESS SPEAKER

HCM04/PS50

Materials: POSCO 18/8 stainless steel, copper, PP, silicone, ABS

Packing: gift box

Printing: engraving, UV printing, pad printing, UV engraving

Certificates: Food Contact, BPA FREE, LFGB, CE, RoHS,
EMC, WEEE Directive



DYNAMIC SET: BUSINESS BACKPACK 15" & AUTOMATIC UMBRELLA

LPN350/US25

Materials: polyester 210D, PU coating, polyester 600D, polyester 1260D, metal, fiberglass, ABS, polyester pongee

Packing: foil

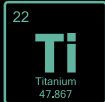
Printing: engraving, epoxy sticker, screen printing, DTF, reflective flex film

Certificates: CE, REACH



OPTIMA

tool collection



Titanium

Titanium is a durable, corrosion-resistant metal known for its high strength-to-weight ratio and excellent durability. One of the primary advantages of titanium tools is their lightweight nature. Titanium has a low density, making tools made from it easy to handle and carry, yet despite its low weight, titanium is known for its impressive strength. Additionally, titanium has great ability to withstand elevated temperatures, which can be advantageous in certain situations.



Aluminum

One of the primary advantages of aluminum is its low density, making it significantly lighter than many other metals. This property is particularly beneficial for tools that need to be portable and easy to handle. Despite its lightweight nature, aluminum boasts a high strength-to-weight ratio, contributing to their overall efficiency and usability. Moreover, aluminum has natural corrosion resistance, making the tools suitable for use in different environments, including outdoor settings.



2Cr13 and 3Cr13 stainless steel

These specific grades of stainless steel offer exceptional resistance to acids and carbonates, ensuring longevity and reliability in diverse applications. Our stainless steel is a composition of 2% and 3% of carbon with about 13% chromium content, which enhances their corrosion resistance. The martensitic structure of these steels provides them with a level of hardness suitable for various tools.



Essential safety

As a manufacturer, we declare that the product meets the key requirements of relevant European Union (EU) directives. Our products conform to essential safety and environmental standards, providing the best experience to our customers. We also provide clear and concise instructions for use, maintenance, and disposal of our products to help ensure their safe use.



Liner lock

Providing the tool lock design, our tools collection has built-in safety device that prevents the blades from closing during use. It effectively eliminates the risk of any harm and doesn't affect the work of your tool.



Warranty

Colorissimo® products are designed and manufactured to meet the highest standards of quality, made in accordance with all the valued declarations and certificates to ensure safety. To provide you the best experience, our Optima collection is covered by a 2-year warranty.





OPTIMA TITANIUM-COATED STEEL POCKET KNIFE

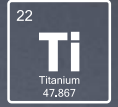
MA03T

Made of high-quality stainless steel with titanium coating for improved hardness and extra corrosion resistance. Colorful inserts on the handle for subtle decoration. Main features: scissors, knife, wood saw, bottle and can opener, fish scraper, corkscrew, punch (for puncturing e.g. a can of juice), threader (for patching inner tubes, sewing sail rafts, patching a tyre), nail file, Phillips screwdriver.

Materials: aluminum, 2Cr13 & 3Cr13 steel, 420HC stainless steel, titanium coating
Packing: elegant black box
Printing: engraving
Certificates: REACH, CE



TITANIUM-COATED TOOL





OPTIMA TITANIUM-COATED STEEL MULTITOOL

MM06T

Made of high-quality stainless steel with titanium coating for improved hardness and extra corrosion resistance. Colorful inserts on the handle for subtle decoration.

Key features: flat pliers, multipurpose pliers, wire cutter, wire stripper, 420HC stainless steel smooth knife blade, wood saw, can and cap opener, wood and metal file, Phillips screwdriver. The multitool has a built-in liner lock safety device to prevent accidental locking while using.

Materials: aluminum, 2Cr13 & 3Cr13 steel, 420HC stainless steel, titanium coating

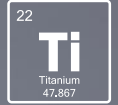
Packing: protective pouch & elegant black box

Printing: engraving

Certificates: REACH, CE



TITANIUM-COATED TOOL





OPTIMA MULTI-FUNCTION TOOL WITH CARABINER

MM08

Optima lightweight folding knife with carabiner, ideal for any kind of a trip. Main features: sharp stainless steel knife, flat and scalloped wrench tip, shackle-type handle, glass punch, bottle opener. Blade made of high-quality black anodised stainless steel. Colour anodised metal body, finished with a window breaker. A metal clip allows to attach the tool to a trouser loop or a backpack. Covered by a 2-year warranty.

Materials: 2Cr13 & 3Cr13 steel, aluminum
Packing: protective pouch & elegant black box
Printing: engraving
Certificates: REACH, CE



ANODISED MULTI-FUNCTION TOOLS





WINDOW BREAKER & BELT CUTTER

OPTIMA MULTIFUNCTIONAL EMERGENCY TOOLS

MK05T | MK03T | MK04T

Durable and versatile tools designed for everyday use, work, or emergencies. Their compact size and sturdy construction make them ideal for home, travel, or outdoor activities. All of the tools feature a glass breaker, as well as a seatbelt cutter, making them ideal for keeping in your car, backpack, or emergency kit.

Materials: aluminum, 2Cr13 & 3Cr13 steel, titanium coating, tungsten

Packing: gift box

Printing: engraving

Certificates: REACH, CE

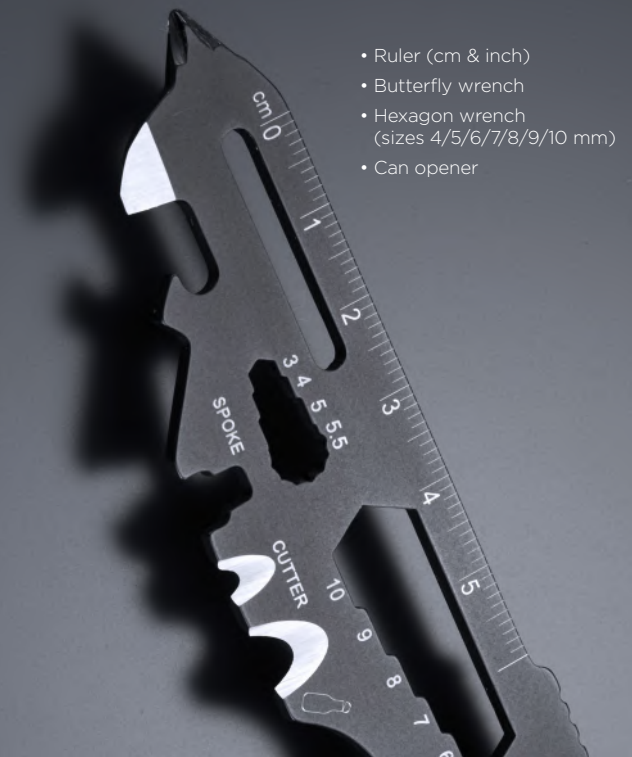
1. MK05T



2. MK03T

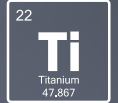


3. MK04T



- Ruler (cm & inch)
- Butterfly wrench
- Hexagon wrench (sizes 4/5/6/7/8/9/10 mm)
- Can opener

TITANIUM-COATED EMERGENCY TOOLS



**MULTIFUNCTIONAL
EMERGENCY TOOL**
MK05T



EMERGENCY KNIFE
MK03T



**SMALL
EMERGENCY KNIFE**
MK04T





OPTIMA HEADLITE PRO HEADLAMP

MT11

A lightweight, high-power aluminum headlamp ideal for work, outdoor activities, and any situation requiring free hands. Two Osram P8 LEDs generate up to 800 lumens of light, while the 180° rotating head allows precise beam direction.

The magnetic base enables easy attachment to metal surfaces, and the flexible, adjustable straps ensure comfortable wear.

Materials: aluminum, plastic

Packing: carton box

Printing: engraving

Certificates: CE, ROHS



180° ADJUSTABLE LIGHT HEAD



OSRAM-POWERED LED DIODES

HIGH-PERFORMANCE HEADLAMP





USB-RECHARGEABLE

OPTIMA FLASHLIGHTS COLLECTION

MT10 | MT09 | MT08 | MT05

A versatile flashlight collection designed for users who value reliability, durability, and everyday practicality. Each model features a robust aluminum construction, comfortable handling, and adaptable lighting options suited for both outdoor activities and daily use. Rechargeable and easy to keep powered on the go, these flashlights offer dependable performance in a compact, modern design.

Materials: aluminum, glass
Packing: factory packaging
Printing: engraving
Certificates: CE, ROHS

1. MT10



2. MT08



3. MT09



4. MT05

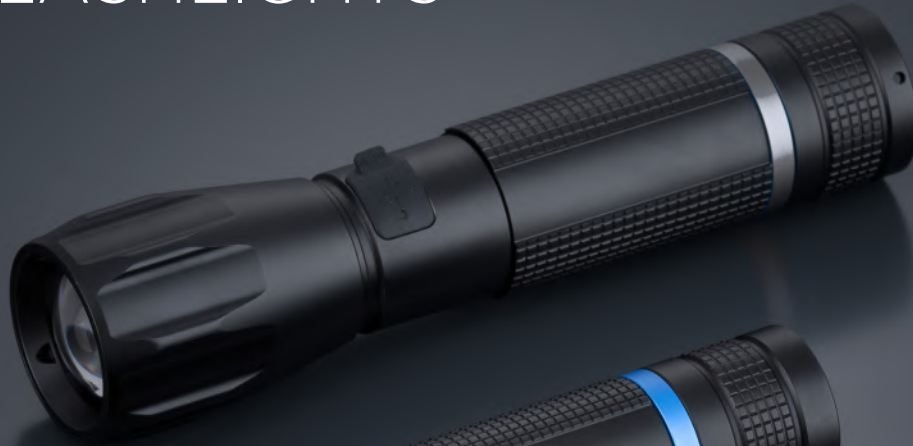


BUILT-IN POWERBANK FUNCTION
(MODEL MT10 ONLY)

RECHARGEABLE FLASHLIGHTS



1.



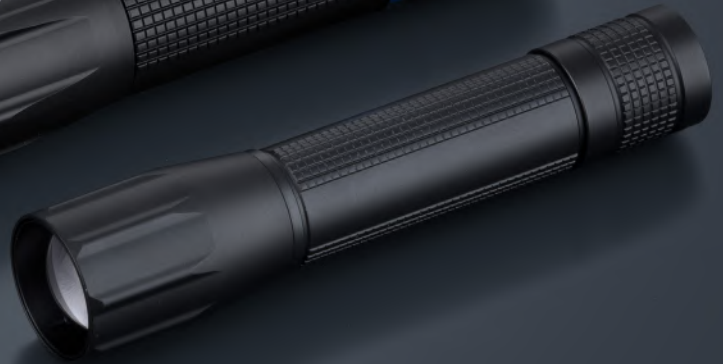
3.



2.



4.



OPTIMA RESCUE SET: EMERGENCY TOOL & LARGE FLASHLIGHT

MK05T/MT06

Materials: aluminum, 2Cr13 & 3Cr13 steel,
titanium coating, tungsten, glass

Packing: gift box

Printing: engraving

Certificates: REACH, CE



OPTIMA COLOR SET: MULTITOOL & MEDIUM FLASHLIGHT

MM06T/MT09

Materials: aluminum, 2Cr13 & 3Cr13 steel,
420HC stainless steel, titanium coating, glass

Packing: gift box

Printing: engraving

Certificates: REACH, CE



SCANDIC

business collection



Powder Coating

Unlike traditional liquid paint applications, our standing-out powder coating employs a dry powder, resulting in a robust finish reserved to the Nordic collection. This advanced technique ensures great resistance to chips, scratches, and wear, guaranteeing longevity and visual appeal. Moreover, our collection showcases a thoughtful design that seamlessly blends aesthetics with functionality. The distinctive pattern not only captures attention but also serves a practical purpose, enhancing the grip and preventing mugs from slipping out of your hand.



Stainless Steel 18/8

This specific grade of stainless steel offers exceptional resistance to acids and carbonates, ensuring longevity and reliability in diverse applications. Our 18/8 stainless steel is a composition of 18% chromium, forming a protective oxide layer on the surface that enhances corrosion resistance. In addition, the inclusion of 8% nickel not only contributes to the steel's durability but further augments its ability to withstand corrosion challenges. Grant yourself components that stand the test of time and maintain superior performance, even in demanding environments.



Warranty

Colorissimo® products are designed and manufactured to meet the highest standards of quality, made in accordance with all the valued declarations and certificates to ensure safety. To provide you the best experience, our Scandic collection is covered by up to 3-year warranty.



POSCO steel

Renowned for its unwavering commitment to international quality certifications and standards, Korean manufacturer POSCO ensures that our components meet the highest benchmarks of precision and durability. Selecting our products means more than just acquiring first-rate components – it signifies a choice for the highest quality and a commitment to sustainability. POSCO steel, with its exceptional properties, ensures optimal performance and longevity. Beyond that, you align yourself with a company deeply rooted in innovation.



REACH compliance

As a manufacturer selling our goods in the EU market, we must comply with REACH regulations, contributing to sustainable and environmentally friendly production practices. Colorissimo® aims at manufacturing the highest quality products while enhancing consumer safety, ensuring long-lasting gifts that will not impact the environment.





SCANDIC DRINKWARE COLLECTION

HCM02 | HTN02 | HBN05

A modern drinkware collection made from high-quality POSCO stainless steel, combining durability, safety, and long-lasting temperature insulation. Powder-coated surfaces add grip and scratch resistance, while leak-proof designs ensure reliable use on the go. BPA-free and certified for food contact, this collection offers practical, reusable solutions for everyday hydration.

Materials: POSCO 18/8 stainless steel, copper, polypropylene, silicone

Packing: factory packaging

Printing: engraving, UV printing, pad printing

Certificates: Food Contact, BPA FREE, LFGB

1. HCM02



2. HBN05



3. HTN02



LEAK-PROOF PUSH-BUTTON LID

SCANDIC POSCO DRINKWARE

posco
steel



1.



2.



3.

SCANDIC SET: VACUUM FLASK 750 ML & COFFEE MUG 350 ML

HTN02/HCM02

Materials: POSCO 18/8 stainless steel, copper, polypropylene, silicone, ABS

Packing: gift box

Printing: engraving, UV printing, pad printing

Certificates: Food Contact, BPA FREE, LFGB



SCANDIC SET: VACUUM FLASK 750 ML & AUTOMATIC UMBRELLA

HTN02/US40

Materials: POSCO 18/8 stainless steel, copper, polypropylene,
silicone, polyester pongee, steel, fiberglass, ABS

Packing: gift box

Printing: engraving, UV printing, pad printing, screen printing, DTF,
reflective flex film

Certificates: Food Contact, BPA FREE, LFGB, REACH





BREATHABLE BACK PANEL,
REFLECTIVE STITCHING

SCANDIC BUSINESS BACKPACK L

LPN800

A spacious and stylish backpack with the capacity of 20 liters. It features two main compartments, side mesh pockets, a front waterproof pocket, and a back panel strap for suitcase attachment. Webbing with reflective thread adds safety, while the high-quality lining ensures durability.

Materials: Polyester Bamboo Grain, polyester 210D, PU silicone coating

Packing: foil

Printing: engraving, epoxy sticker

Certificates: REACH



FUNCTIONAL BUSINESS BACKPACK





COMPRESSION STRAPS

SCANDIC BUSINESS BACKPACK XL

LPN810

A spacious and durable backpack with the capacity of 22 liters. Features three main compartments, side zipper pockets, a front waterproof pocket, adjustable side and chest straps, and a hidden back panel zipped pocket. Webbing with reflective thread adds safety, while the high-quality lining ensures long-lasting use.

Materials: Polyester Bamboo Grain, polyester 210D,
PU silicone coating
Packing: foil
Printing: engraving, epoxy sticker
Certificates: REACH



BREATHABLE BACK PANEL,
REFLECTIVE STITCHING

DAILY COMMUTE BACKPACK





SIDE INSULATED POCKET



METAL REINFORCED HANDLE

SCANDIC BUSINESS BACKPACK XXL

LPN820

A large, durable backpack crafted from bamboo-grain fabric with PU accents. Features three compartments, including a thermal zipped pocket, a front waterproof pocket, adjustable side and chest straps, a metal handle, and a hidden back panel zipper pocket. Webbing with reflective thread adds safety, while the high-quality lining ensures long-lasting use.

Materials: Polyester Bamboo Grain, polyester 210D, PU silicone coating

Packing: foil

Printing: engraving, epoxy sticker

Certificates: REACH



BREATHABLE BACK PANEL,
REFLECTIVE STITCHING

WORK & TRAVEL BACKPACK





SCANDIC 2IN1: CABIN BACKPACK WITH A TRAVEL BAG FUNCTION

LPN830

A compact and versatile cabin backpack made from bamboo-grain polyester with matte PU accents. Features two compartments, adjustable side straps, a top and side handle, and hidden shoulder straps for flexible carrying. The interior is designed like luggage for organized packing.

Materials: Polyester Bamboo Grain, polyester 210D, PU silicone coating

Packing: foil

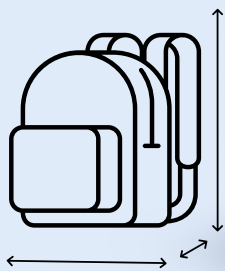
Printing: engraving, epoxy sticker

Certificates: REACH



INTERIOR COMPRESSION STRAPS

2 IN 1 EASY-CARRY BACKPACK



CABIN SIZE
29 × 19 × 39 CM



SCANDIC FULLY AUTOMATIC UMBRELLA

US40

A durable umbrella made from 191 pongee fabric with a steel and fiberglass frame. Features a reflective trim along the canopy for enhanced visibility, an automatic opening and closing system, and an anti-wind mechanism for reliability.

Materials: steel, fiberglass, ABS, polyester pongee

Packing: foil

Printing: screen printing, DTF, reflective flex film

Certificates: REACH

□



AUTOMATIC CLOSING & OPENING

NIGHT-SAFE UMBRELLA

Enhanced visibility with reflective edge trim



BIZZ PRO

business collection



Pongee polyester

To ensure effective protection against rain, our umbrellas are made of pongee polyester. The dense weave enhances water resistance and allows rainwater to run off the surface quickly, while the fabric itself dries fast. The material is lightweight, durable, and resistant to everyday use, ensuring long-lasting aesthetics and reliable performance of the umbrella.



AirChannel System

Designed for enhanced wearing comfort, our backpacks feature an AirChannel ventilation system. It enables air circulation between the backpack and the wearer's back, helping to reduce heat and moisture build-up. This solution keeps the back dry and comfortable, even during extended use.



Warranty

Colorissimo® products are designed and manufactured to meet the highest standards of quality, made in accordance with all the valued declarations and certificates to ensure safety. To provide you the best experience, our Bizz Pro collection is covered by up to 3-year warranty.



Reliable quality

At the core of our business collection is 1680D polyester – its exceptionally dense and compact structure significantly enhances resistance to abrasion, mechanical damage, and heavy use, ensuring long-lasting durability and reliability. This material not only strengthens the construction but also gives the products a professional and robust character.



REACH compliance

As a manufacturer selling our goods in the EU market, we must comply with REACH regulations, contributing to sustainable and environmentally friendly production practices. Colorissimo® aims at manufacturing the highest quality products while enhancing consumer safety, ensuring long-lasting gifts that will not impact the environment.





BIZZ PRO ONE- AND TWO-COMPARTMENT LAPTOP BAGS

LLN420/LLN430

Elegant business laptop bags made of dense and durable 1260D polyester. Both bags feature a dedicated 15" laptop pocket and two additional pockets, perfect for storing accessories such as a phone or charger. The external pocket includes an additional slot for pens. For travel convenience, a fastening strap is sewn into the back panel, allowing the bag to be securely attached to a suitcase frame. The adjustable, reinforced shoulder strap and comfortable handles ensure carrying comfort in any situation.

Materials: polyester 1260D, polyester 210D,
PU coating

Packing: foil

Printing: engraving, epoxy sticker

Certificates: REACH



BIZZ PRO LAPTOP BAGS



2.

1.



BIZZ PRO THREE- AND FOUR-COMPARTMENT BUSINESS BACKPACKS

LPN400/LPN410

Elegant business backpacks combining comfort and functionality. Made of dense 1260D polyester for exceptional durability and daily use. Reinforced walls protect contents, including a dedicated padded compartment for a 15" laptop and a pocket for a tablet. The spacious main compartment features multiple dividers for organizing small accessories. Additional external zippered pockets offer extra space for everyday essentials. A breathable back system and reinforced, adjustable straps ensure comfortable carrying. Ideal for those who appreciate style and practicality.

Materials: polyester 1260D, polyester 210D,
PU coating

Packing: foil

Printing: screen printing, engraving, epoxy sticker

Certificates: REACH



BIZZ PRO BACKPACKS



1.



2.

COMPACT BAGS



BIZZ PRO COMPACT BAGS

LNN450/LHS440

The bags are constructed from durable 1260D polyester for damage resistance and feature strong stitching for long-lasting durability. Reinforced walls provide extra protection for contents. Equipped with waterproof zippers for added protection against the elements. Attention to detail with multiple functional features for enhanced usability.

Materials: polyester 1260D, polyester 210D,
PU coating

Packing: foil

Printing: screen printing, engraving, epoxy sticker

Certificates: REACH



1.

2.

DOUBLE-LAYER CANOPY UMBRELLA



BIZZ PRO UMBRELLA FOR TWO

UP70

A durable and stylish umbrella with a 128 cm canopy made from 190 pongee fabric. Features a strong steel and fiberglass frame, ABS plastic handle, and an automatic open function for easy use. REACH certified.

Materials: steel, fiberglass, ABS, polyester pongee

Packing: foil

Printing: screen printing, DTF, reflective flex film

Certificates: REACH



